

# NENAB®

NENAB jacking beam type ALS-8/1,5 is designed for use on four column lifts or over inspection pits.

Cylinder with pneumatic safety valve which locks the jack in the current position in the event of the hose rupturing.



One-hand control for lifting and two-hand control for lowering. When not activated, the control mechanism returns to the locked neutral position.

CE -marked

The jack is designed to be used to jack up cars in connection with inspection and repair of wheel suspensions, steering mechanisms, wheel bearings and tyres, etc.

The jack is reliable, easy to operate and service and meets very high requirements with regard to safety, rapidity and stability.

Please note that the jack is the only jack on the market to be provided with a control mechanism on both sides.

**Lifting power 1,5 tonnes at 8 bar. See overleaf for the main dimensions.**

Manufacturer: Ing.firma NEVINOR AB, Box 311, 811 23 SANDVIKEN, Sweden  
Tel. +46 26 25 07 30. Fax +46 26 25 88 25

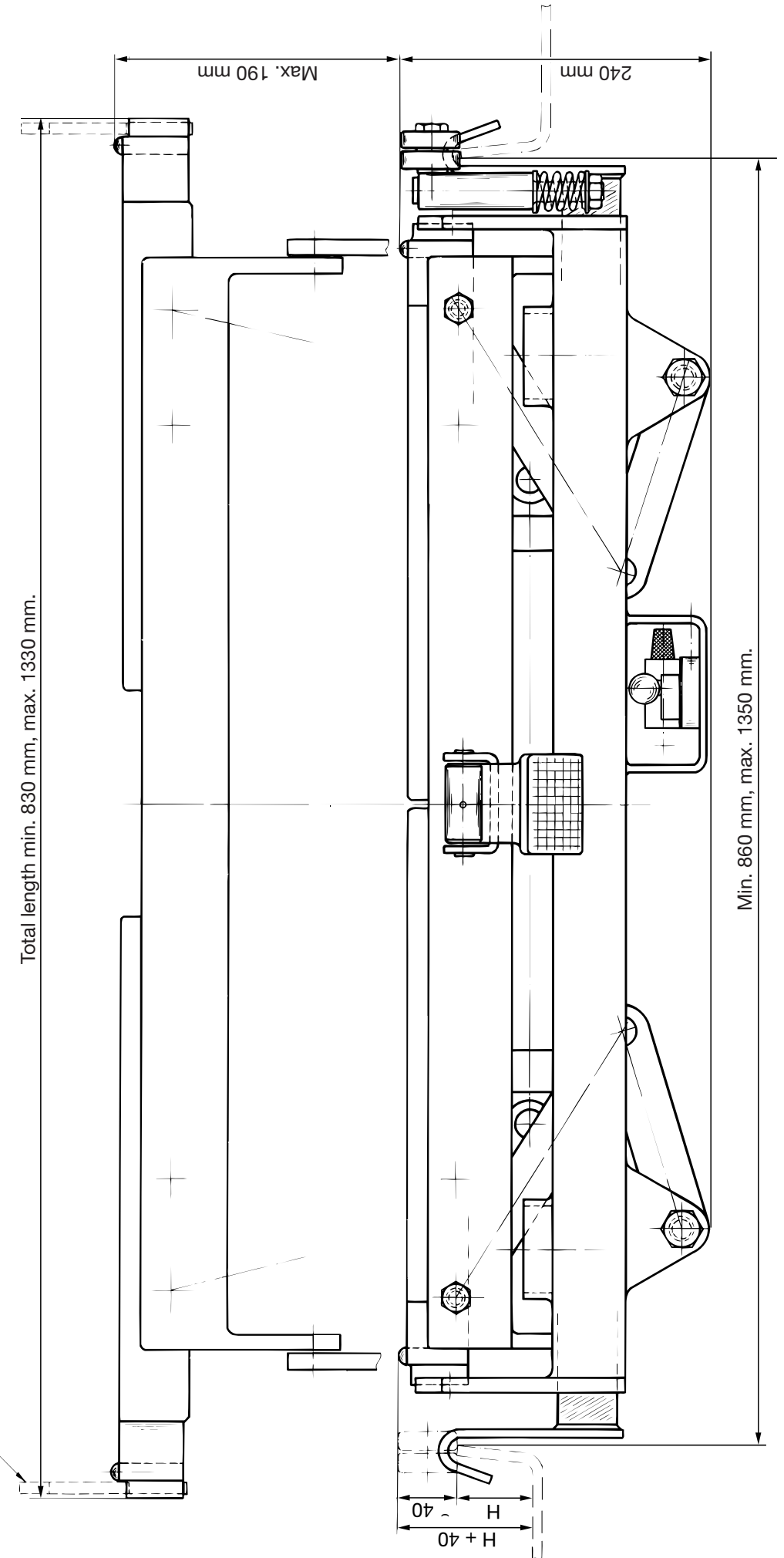
# NENAB®

A guarantee of high quality and practicality.

The jack has been designed and tested in consultation with the Technical Department of AB Svensk Bilprovning.

Replaceable support with heights 40, 65 and 120 mm.

Total length min. 830 mm, max. 1330 mm.



The figure shows the jack's main dimensions.